

NOTICE TO MARINERS

DUDGEON OFFSHORE WIND FARM CONSTRUCTION WORKS

NOTICE IS HEREBY GIVEN that construction activities are in progress at the Dudgeon Offshore Wind Farm and Export Cable Corridor.

Foundation Installation

The OLEG STRASHNOV Heavy Lift Vessel, operated by Seaway Heavy Lifting, will install the 67 Wind Turbine Generator foundations and the substation topside in the wind farm area. The OLEG STRASHNOV will be supported by anchor handling tugs. This operation is expected to start from 18th March 2016 and expected to be completed by end-August 2016.

The STANISLAV YUDIN Heavy Lift Vessel, operated by Seaway Heavy Lifting, will install the substation jacket foundation in the wind farm area. The STANISLAV YUDIN will be supported by anchor handling tugs. This operation is expected to start early-May 2016 and expected to be completed by end-May 2016.

Cable Installation

PONTRA MARIS, operated by VBMS, will complete the ducts after cable installation at the export cable landfall site near Weybourne. PONTRA MARIS will start work mid-April 2016.

The STEMAT SPIRIT cable laying vessel, operated by VBMS, will install two export cables from the cable landfall near Weybourne and progress towards the offshore substation location. The STEMAT SPIRIT will be supported by anchor handling tugs. This operation is expected to start from 18 March 2016 and expected to be completed by end-August 2016.

The NDEAVOR cable laying vessel, operated by VBMS, will install inter-array cables to connect wind turbines to the offshore substation. This operation is expected to start late June 2016 and expected to be completed by mid-September 2016.

The Grand Canyon will be performing burial of the Inter Array Cables. This operation is expected to start early August 2016

The Boskalis Seahorse will perform rock installation as scour protection around the Substation. This operation is expected to start late May 2016.

GENERAL

All vessels will exhibit appropriate lights and shapes prescribed by the International Regulations for Preventing Collisions at Sea.

ALL VESSELS ARE REQUESTED to give all construction and support vessels a wide berth.

MARINERS ARE ADVISED to navigate with caution and keep continued watch on VHF Ch. 16 when navigating the area.

A further notice to mariners will be issued when these works are completed, expected autumn 2016.

**Please direct any enquiries regarding this notice to:
Statoil Wind Control Centre - statoilwindcontrol@statoil.com**

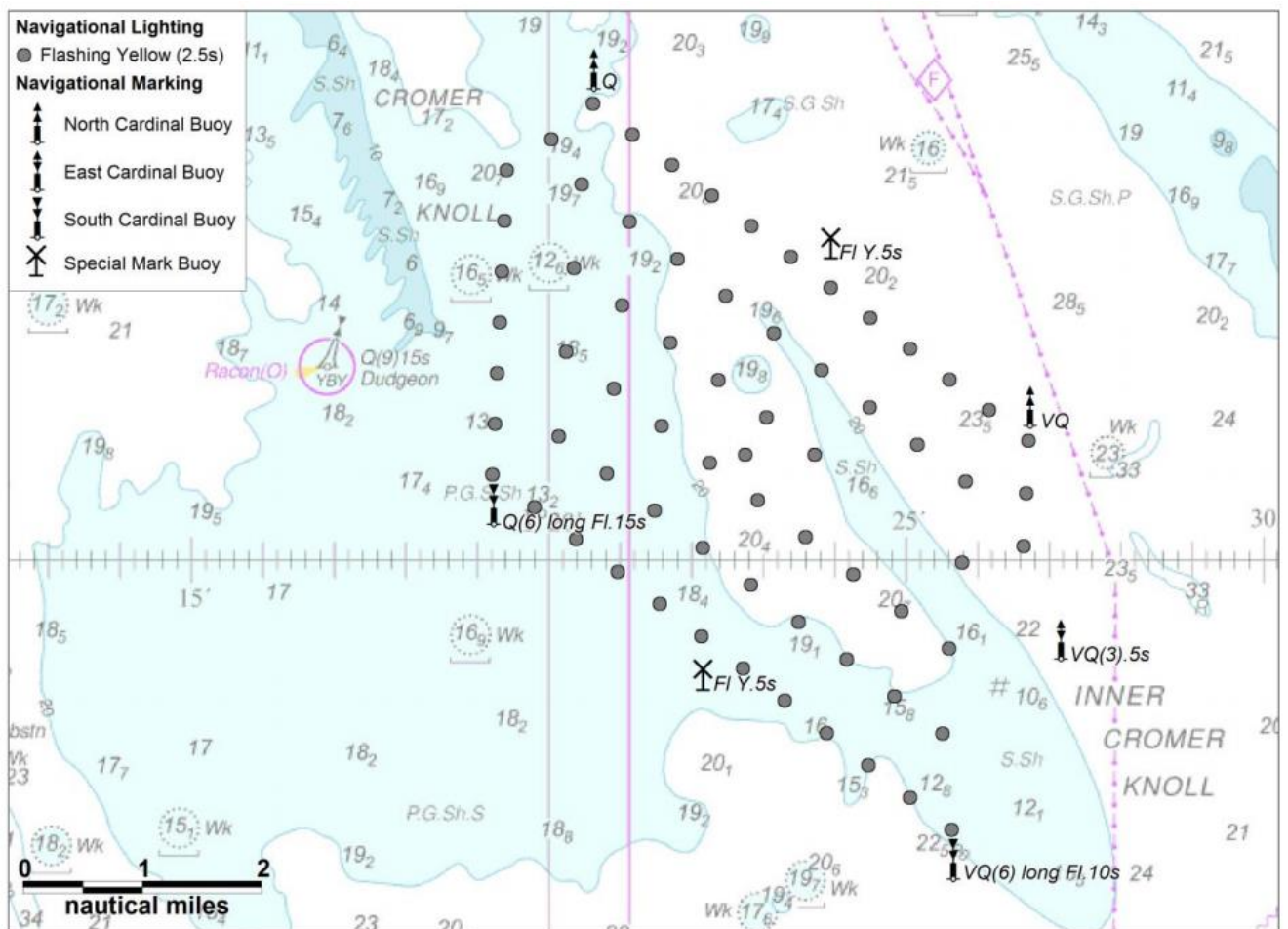
A copy of this notice can also be found at:

<http://dudgeonoffshorewind.co.uk/news/notice-to-mariners>

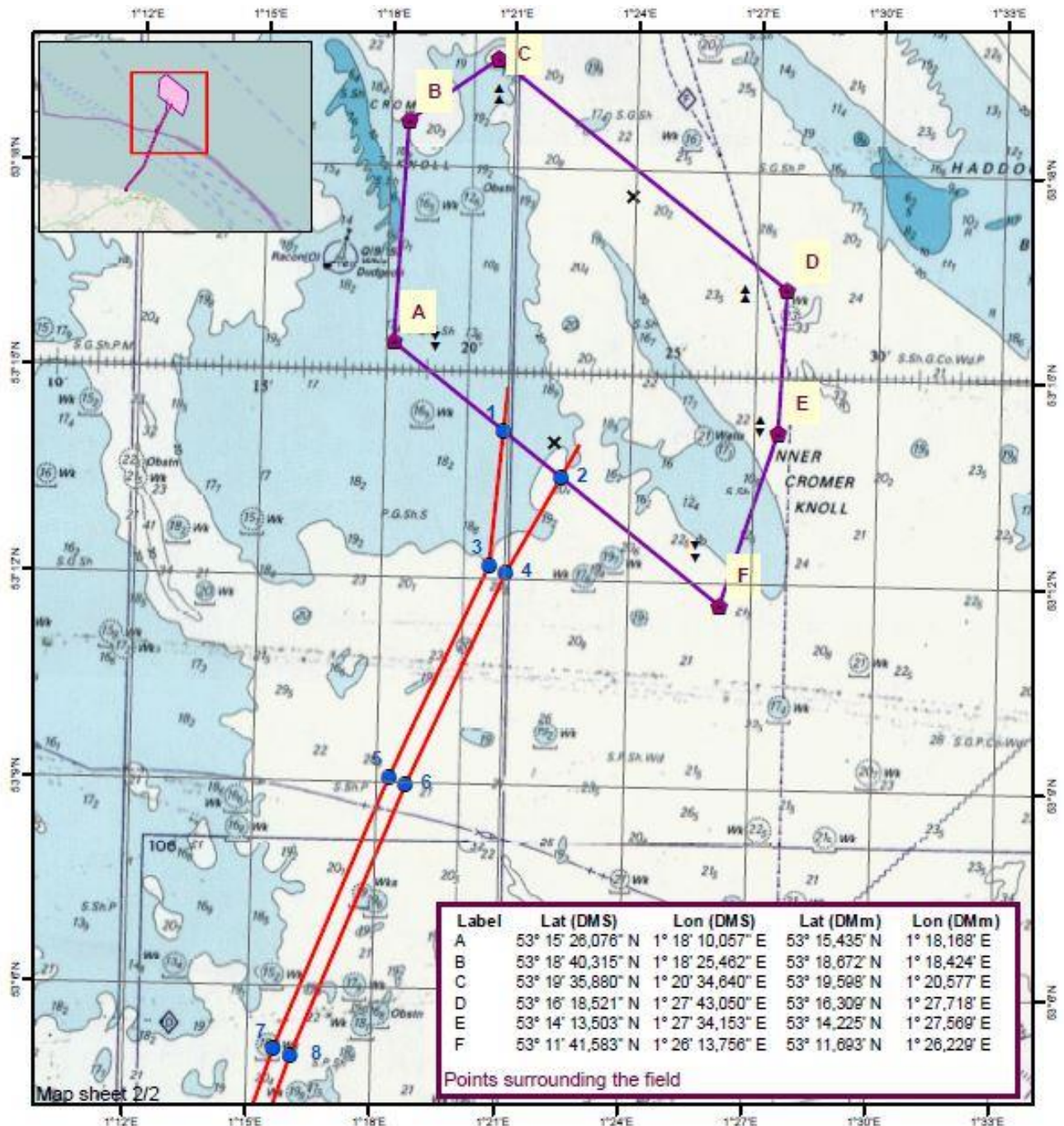
SITE DETAILS

Position of Navigation Buoys demarcating the Dudgeon Offshore Wind Farm site

Mark	Location	Name	Latitude	Longitude	Status	Flash Character	Code	Range
North Cardinal	NW Cardinal	N-DOW	53° 19,102' N	1° 20,592' E	Temporary	Q	601	5nm
Special Mark	Special Mark North	DOW - SM - N	53° 17,631' N	1° 23,919' E	Temporary	Fl.Y.5s	328	5nm
North Cardinal	North East Cardinal	NE - DOW	53° 16,277' N	1° 26,691' E	Temporary	VQ	501	5nm
East Cardinal	East Cardinal	E- DOW	53° 14,320' N	1° 27,123' E	Temporary	VQ(3).5s	508	5nm
South Cardinal	SE Cardinal	S - DUDGEON	53° 12,470' N	1° 25,617' E	Permanent	VQ(6) long Fl.10s	516	5nm
Special Mark	Special Mark South	DOW - SM - S	53° 14,012' N	1° 22,132' E	Temporary	Fl.Y.5s	328	5nm
South Cardinal	SW Cardinal	SW - DOW	53° 15,451' N	1° 19,188' E	Temporary	Q(6) long Fl.15s	631	5nm

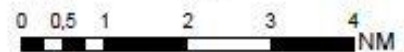


Wind farm area and cable corridor north












Label	Lat (DMS)	Lon (DMS)	Lat (DMm)	Lon (DMm)
1	53° 14' 10,494" N	1° 20' 53,200" E	53° 14,175' N	1° 20,887' E
2	53° 13' 30,784" N	1° 22' 18,795" E	53° 13,513' N	1° 22,313' E
3	53° 12' 12,063" N	1° 20' 36,508" E	53° 12,201' N	1° 20,608' E
4	53° 12' 5,472" N	1° 21' 1,112" E	53° 12,091' N	1° 21,019' E
5	53° 9' 4,426" N	1° 18' 17,288" E	53° 9,074' N	1° 18,288' E
6	53° 8' 58,127" N	1° 18' 42,081" E	53° 8,969' N	1° 18,701' E
7	53° 5' 4,975" N	1° 15' 38,228" E	53° 5,083' N	1° 15,637' E
8	53° 4' 59,401" N	1° 16' 3,461" E	53° 4,990' N	1° 16,058' E

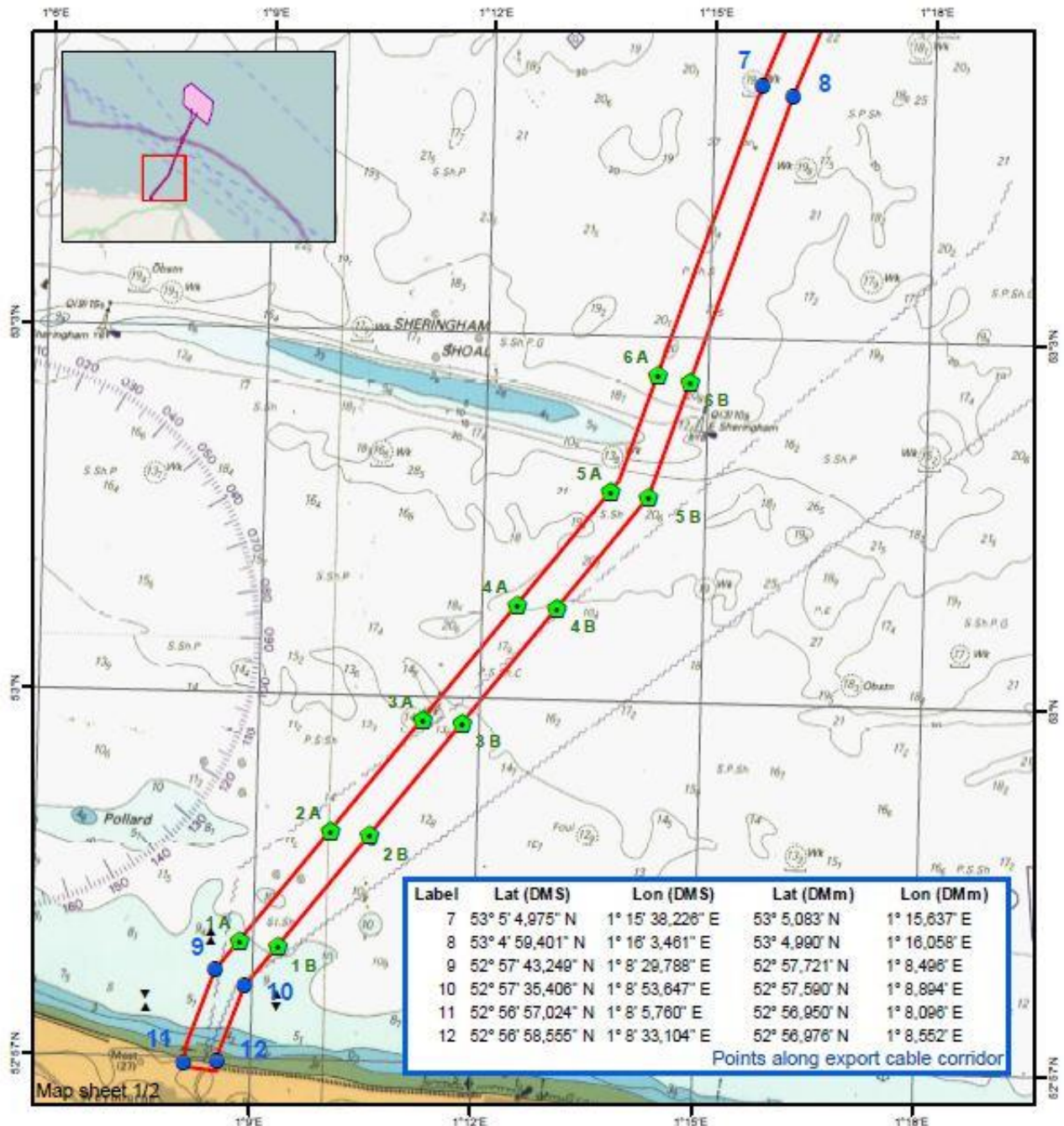
Points along export cable corridor



Legend

-  Field Boundary Corner points
-  Field Boundary added 1000m
-  Survey Area - Export Cable, points
-  Survey Area - Export Cable
-  East Cardinal
-  North Cardinal
-  South Cardinal
-  Special Mark
-  West Cardinal

Cable corridor south and export cable landfall



Label	Lat (DMS)	Lon (DMS)	Lat (DMm)	Lon (DMm)
1 A	52° 57' 57,894" N	1° 8' 48,791" E	52° 57,965' N	1° 8,813' E
1 B	52° 57' 55,481" N	1° 9' 19,702" E	52° 57,925' N	1° 9,328' E
2 A	52° 58' 53,227" N	1° 10' 0,633" E	52° 58,887' N	1° 10,011' E
2 B	52° 58' 51,451" N	1° 10' 32,388" E	52° 58,858' N	1° 10,540' E
3 A	52° 59' 49,079" N	1° 11' 13,218" E	52° 59,818' N	1° 11,220' E
3 B	52° 59' 47,880" N	1° 11' 45,752" E	52° 59,798' N	1° 11,763' E
4 A	53° 0' 46,724" N	1° 12' 28,201" E	53° 0,779' N	1° 12,470' E
4 B	53° 0' 45,434" N	1° 13' 0,623" E	53° 0,757' N	1° 13,010' E
5 A	53° 1' 43,601" N	1° 13' 42,256" E	53° 1,727' N	1° 13,704' E
5 B	53° 1' 41,112" N	1° 14' 13,136" E	53° 1,685' N	1° 14,219' E
6 A	53° 2' 41,270" N	1° 14' 18,352" E	53° 2,688' N	1° 14,306' E
6 B	53° 2' 38,543" N	1° 14' 45,145" E	53° 2,642' N	1° 14,752' E

Points marking 1NM intervals from shore



Legend

-  1 NM Interval from shore
-  Survey Area - Export Cable, points
-  Survey Area - Export Cable
-  East Cardinal
-  North Cardinal
-  West Cardinal

KEY CONSTRUCTION VESSEL CONTACT DETAILS

Oleg Strashnov



Callsign: 5BNL2

Bridge phone : +31 88 732 92 31/32

Immarsat F77 +870 765 050 118

Email oleg-strashnov@shl.com.cy

Stanislav Yudin



Callsign: 5BYM2

Bridge phone : +31 793 637 718

Immarsat F77 +870 765 050 121

Email stanislav-yudin@shl.com.cy

Stemat Spirit



Callsign: PBSO
Bridge phone : +31 207083417
E-mail: captain.stematspirit@stemat.com

Ndeavour



Callsign: 5BVG3
Bridge phone : +87 0773 187 969 / Vsat. +31 10 713 05 28
E-mail: NDEAVOR-captain@boskalis.com

Pontra Maris



Callsign: PGUZ

Barge master phone: +31 6 502 23 761 / +31 20 780 35 82

E-mail:

Grand Canyon



Callsign: 3EVR8

Bridge phone: TBA

E-mail : TBA

Seahorse



Callsign: PCAP
Bridge phone: TBA
E-mail : TBA